

Dragonfire Racing

2330 W. Broadway Rd #112

Mesa, AZ 85202

1 (800) 708-9803

WWW.DRAGONFIRERACING.COM



FEEL THE HEAT!

RacePace “Smash” Rear Bumper

For RZR 800 (08-12’)

Congratulations on your purchase of the Race Pace “Smash” Rear Bumper. This item is part of our Race Pace line of products, a true race inspired line. Built with all of the same quality and great materials that DragonFire is known for. Be sure to check out our web site for the entire line of Race Pace products for your RZR.



- *Towing with this bumper may result in damage to bumper or vehicle
- *Do not use if there is any sign of damage
- *Check all hardware before use
- *Contact with other vehicles or objects is not recommended

Tools Required

1/2" & 7/16" Wrench and Socket

5/16" Drill bit

Power Drill

27 Torx Bit

Disclaimer

Off road activities can be hazardous and could lead to injury, dismemberment, paralysis and death. No warranty of representation is made as to the products ability to protect the user from any injury or death. The user assumes that risk. The acceptance and /or use of this merchandise purchased from DragonFire by the customer hereby shall release DragonFire from any and all liability pertaining to the use of such merchandise.

Step 1 – Remove (2) Stock Torx screws from bed plastic. They are located above the exhaust in the center of bed. *(See photo right)*



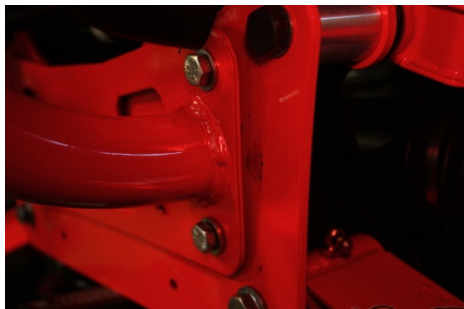
Step 2 – Using 5/16" drill bit, drill out the existing bolt hole where Torx screws were installed. *(See photo right)*



Dragonfire Racing

Step 3 – Hold bumper up to car and align top 2 tabs of the bumper with drilled out bolt holes. The bottom of the bumper will sit flat against frame (or DFR gusset kit as pictured). You will be able to see bottom 4 bolt holes of mounting plate align with 4 factory drilled holes on frame.

Step 4 – Start by loosely (first few threads) installing supplied 5/16” bolts in the bottom mounting plate of bumper. *(See photo right)*

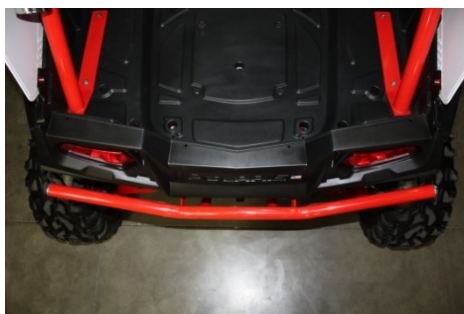


Step 5 – Now install top 2 (longer) supplied 1/4” bolts. These will go through top 2 mounting tabs on bumper and through supplied spacers in hardware kit. Be sure to install 1 supplied washer under each bolt head on top of mounting tab. *(See photo right)*



Spacers are no longer welded to bumper tabs and are supplied separate

Step 6 – Finish tightening all bolts hand tight. Be sure to check and see that the bumper is mounted straight and securely. Note: due to flexing in chassis, you may need to use supplied spacing washers under upper mounting tabs to achieve correct spacing from bed plastic. *(See photo right)*



For further assistance please call 800-708-9803

Pro Tip: Be sure to check bolts frequently and re-torque if needed.

www.DragonFireRacing.com



Dragonfire Racing